

GEMSTONE REPORT

R-201812481



ID

Natural Sapphire

Color

Pink

Enhancement

Heat Treated

Origin

Madagascar

Photos Gallery

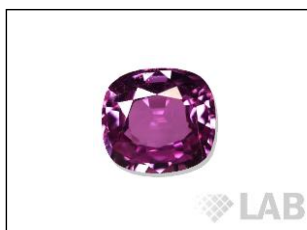


Image is approximate

Date**12.09.2018**

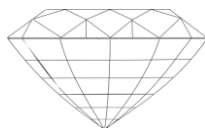
Weight**1.70ct**

Shape**Cushion**

Cut**Brilliant/ModStep**

Dimensions.....**7.30x6.57x3.96**

Cut



Instruments used:

**see next page for data report



IR



EDX



Magnification



Uv-vis



PL



Raman